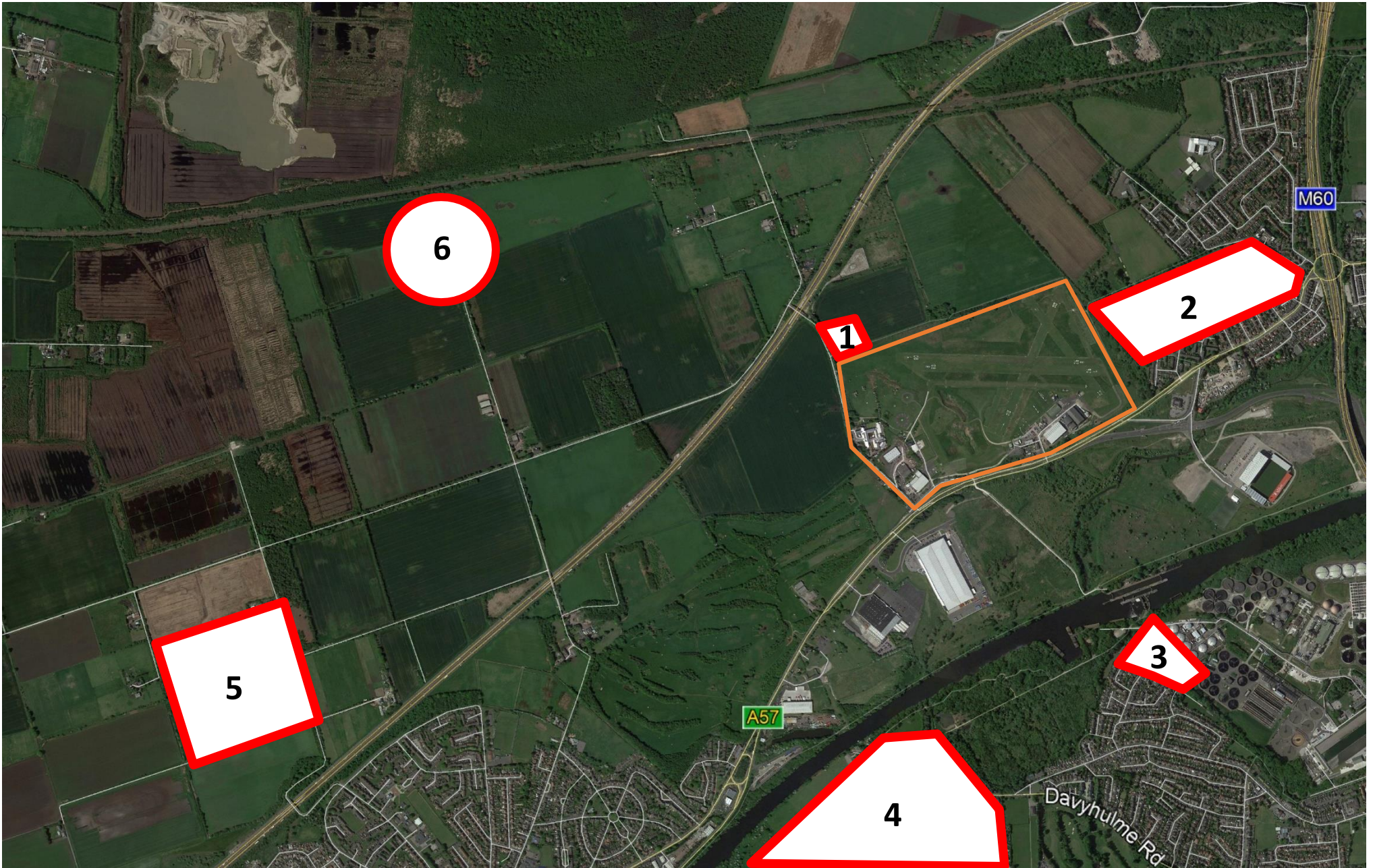


# Noise Abatement Areas

As part of our good neighbor policy, we kindly ask all pilots utilizing Manchester Barton Aerodrome and Manchester Heliport to be mindful of the designated noise-sensitive areas outlined below.

In the interest of adhering to our published Noise Abatement Policies, we respectfully request that flight paths be arranged to minimize disturbance whenever feasible and safe to do so.



		Location
1	Tunnel Farm	On the North-Western aerodrome boundary; minimise noise disturbance where possible
2	Cemetery	On the North-Eastern aerodrome boundary; minimise overflights at low level to reduce noise disturbance
3	Stickens Farm	Farm with livestock located between the sewage works south of the aerodrome and the village of Flixton. Helicopters to avoid overflights at low level
4	Runway 20 Departures	When safe to do so, perform an early right turn after departure prior to the Ship Canal to minimise overflights of the Flixton and Davyhulme residential areas
5	Moss Farm Fisheries	Farm with livestock located alongside the fisheries that become visible from the climb out of Runway 26L/R
6	Birch Farm	General Farm residence, particular concern over repetitive noise and EFATOs when using 26L/26R